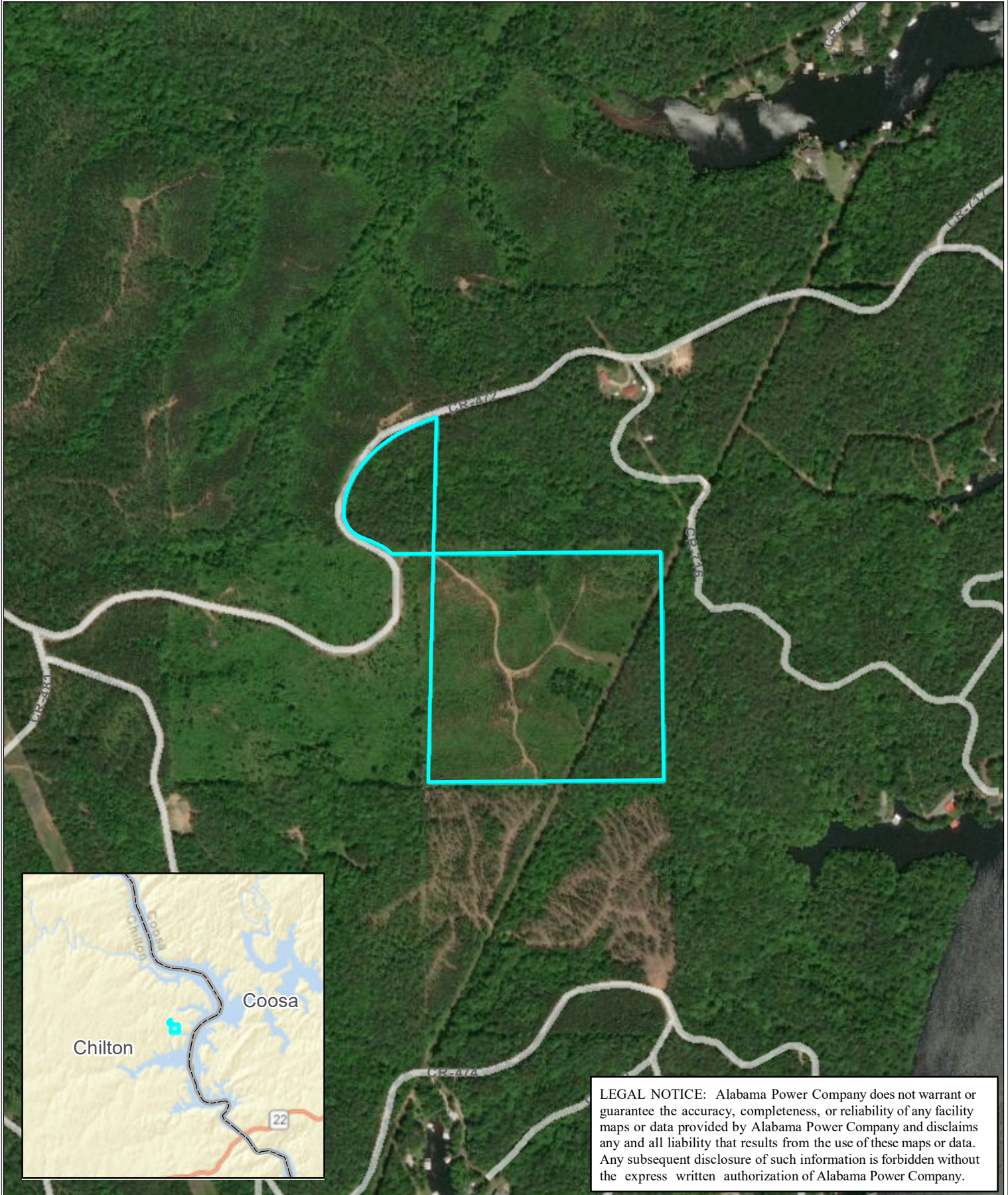


Chilton County - Approximately 39 Acres



LEGAL NOTICE: Alabama Power Company does not warrant or guarantee the accuracy, completeness, or reliability of any facility maps or data provided by Alabama Power Company and disclaims any and all liability that results from the use of these maps or data. Any subsequent disclosure of such information is forbidden without the express written authorization of Alabama Power Company.



Copyright 2018
All Rights Reserved
Alabama Power Company
GIS Services
1-888-SOCO-GIS
RoughRidgeHC_AP_20181206_JD

